

ALL PRODUCT DIMENSIONS EXPRESSED IN MILLIMETRES (mm)

# "HARDIPLANK"

## BUILDING PLANKS



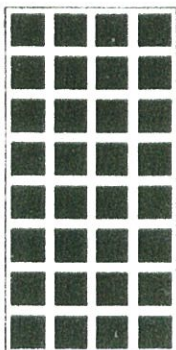
"Hardiplank" has all the virtues of popular "Hardiflex". It is rot-proof, white ant and borer proof, fireproof, dimensionally stable under extremes of heat and cold, cannot split or warp, handles and works like timber (nail it, saw it), and has a practicability all of its own.

ALL PRODUCT DIMENSIONS EXPRESSED IN MILLIMETRES (mm)

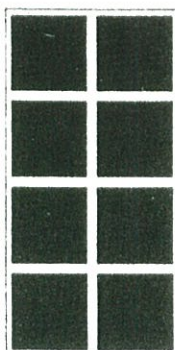
# "VERSILUX"

## ACOUSTIC PATTERN SHEETS

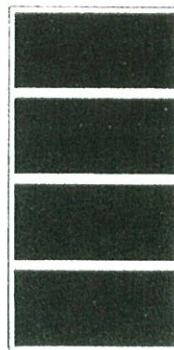
"Versilux" sheets perforated with 4.4 (11/64") holes in patterns of squares and rectangles. For use where noise reduction is required. Available in the following patterns.



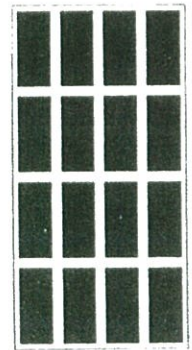
Type 'A'



Type 'B'



Type 'C'



Type 'D'

ALL PRODUCT DIMENSIONS EXPRESSED IN MILLIMETRES (mm)

# “COLORBORD”

## PERMANENTLY COLOURED SHEETS



Compressed smooth-faced asbestos cement sheeting for interior and exterior use.  
Permanently coloured one side.

Sixteen modern plain colours:—

200 Dark Grey

202 Light Grey

204 Green Grey

206 Charcoal

208 Khaki

210 Mountain Blue

212 White

214 Forest Green

220 Gunmetal

222 Gold

224 Buff

226 Olive Tone

228 Lemon Gold

230 Bone

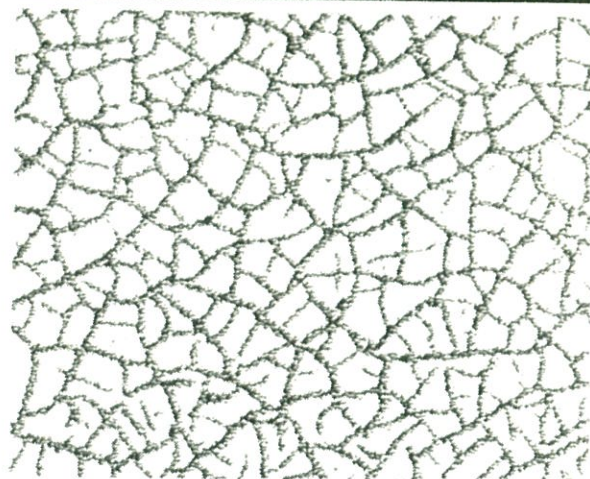
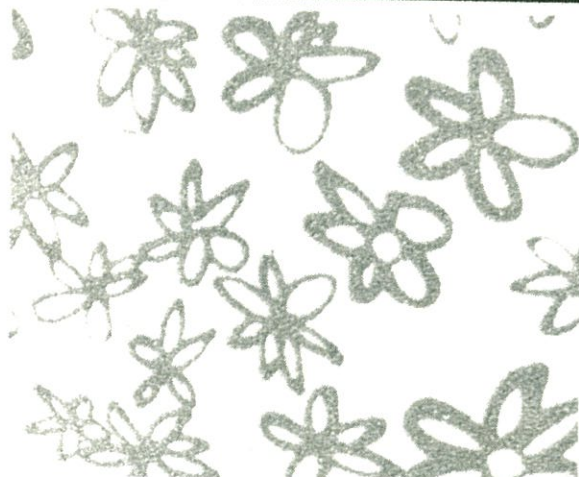
234 Beige

236 Burnt Bronze

Thickness 4.0 (5/32"). All colours manufactured to order, except where indicated \*.

ALL PRODUCT DIMENSIONS EXPRESSED IN MILLIMETRES (mm)

# “TILUX” COLOURED AND PATTERNED SHEETS



Compressed and autoclaved. Attractive hardwearing, waterproof surface. Available in two patterns and eight colours.

Two patterns with four colours of each one.

## SPRINGTIME PATTERN

Springtime Lemon  
Springtime Gold  
Springtime Blue  
Springtime Pink

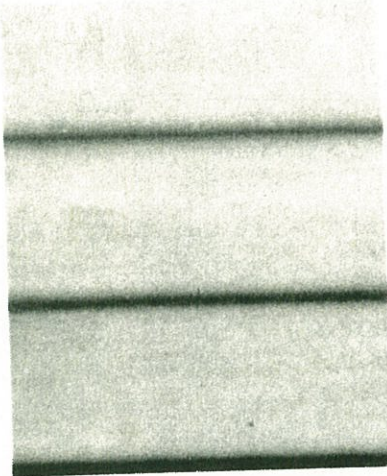
## ITALIAN PATTERN

Casino Blue  
Roma Green  
Milano Grey  
Sorrento Gold

ALL PRODUCT DIMENSIONS EXPRESSED IN MILLIMETRES (mm)

# HARDIE'S "CHAMFERBOARD"

## Horizontal Profiled Wall Panels



"Chamferboard" cuts maintenance, painting costs and fire risk. Will not buckle or warp; is white ant and borer proof and needs no sealer or undercoat for plastic or resin-based paints.

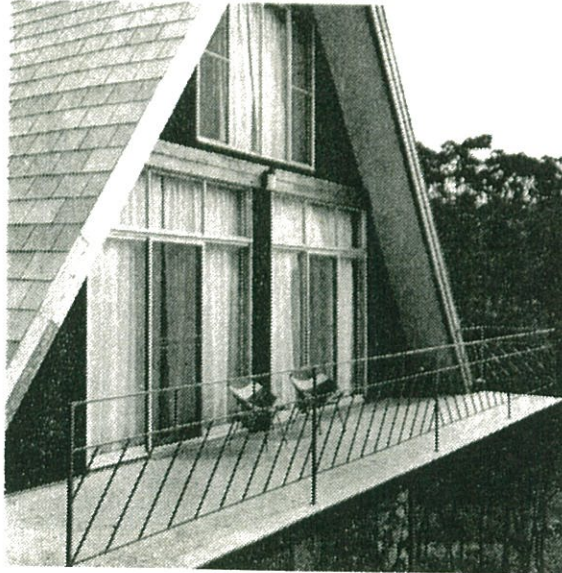
Depth of panel	320	(12 9/16")
Net cover	305	(12")
Thickness	4.5	(3/16")
Stock lengths	2 100	(6'10 11/16")
	2 400	(7'10 1/2")
	2 700	(8'10 5/16")
	3 000	(9'10 1/8")

Art. WP5: Hardie's "Chamferboard" — Price per metre —

\$0.79

ALL PRODUCT DIMENSIONS EXPRESSED IN MILLIMETRES (mm)

# HARDIE'S COMPRESSED SHEET



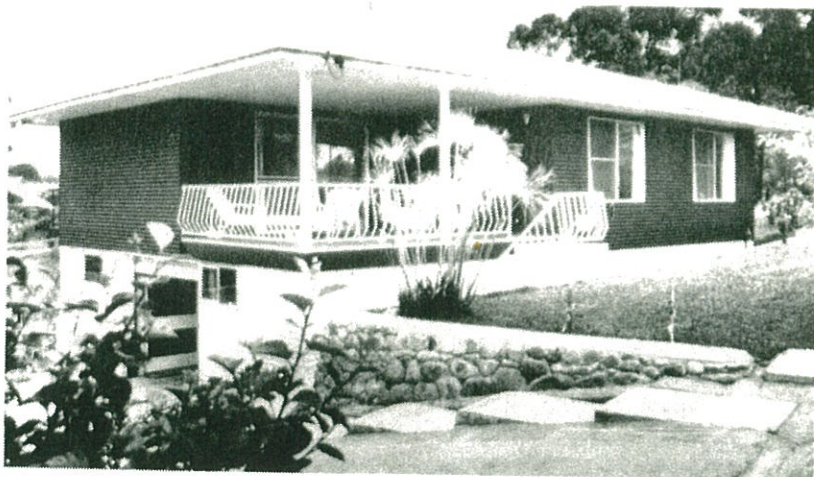
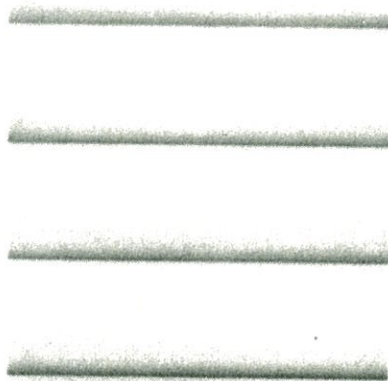
Fully compressed A.C. sheets with smooth surface on both sides. For specialised use such as balustrades, stair treads, infills for curtain walls, toilet partitions, bathroom floors, suspended decks, sun louvres, window sills, laboratory bench tops, formwork etc. Also available with non-skid patterned surface on oneside.

Art. F8: STANDARD SURFACE COMPRESSED SHEET  
Smooth surface both sides.

ALL PRODUCT DIMENSIONS EXPRESSED IN MILLIMETRES (mm)

# HARDIE'S "LOG CABIN"

## Profiled Wall Panels



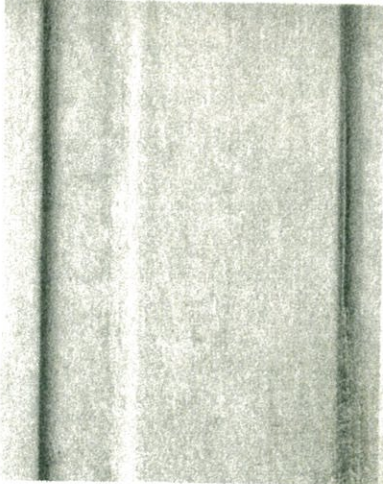
Hardie's "Log Cabin" Sheets may be fixed horizontally or vertically for interior or exterior walling, screens, carports, feature walls, etc. Proud owners of homes clad with Hardie's "Log Cabin" can look forward to a lifetime of "minimum maintenance" — painting costs are cut because "Log Cabin" requires no sealers or undercoats with modern plastic paints.

Depth of panel	375	(14 $\frac{3}{4}$ " )
Net cover	355	(14" )
Thickness	4.5	( $\frac{3}{16}$ " )
Stock lengths	2 100	(6'10 $\frac{11}{16}$ " )
	2 400	(7'10 $\frac{1}{2}$ " )
	2 700	(8'10 $\frac{5}{16}$ " )
	3 000	(9'10 $\frac{1}{8}$ " )

ALL PRODUCT DIMENSIONS EXPRESSED IN MILLIMETRES (mm)

# HARDIE'S "SHADOWLINE"

## Vertical Profiled Wall Panels



Hardie's "Shadowline" is a vertically ribbed wall sheet for use on walls of domestic dwellings or industrial projects. The lap method of jointing provides a weather-tight and inconspicuous joint which eliminates cover moulds.

Ideally suited to screens, partitions and fencing projects.

Width of panel	1 055	(3'5½")
Net cover	915	(3'0")
Thickness	6.0	(¼")
Stock lengths	1 800	(5'10 7/8")
	2 100	(6'10 11/16")
	2 400	(7'10½")
	2 700	(8'10 5/16")
	3 000	(9'10 1/8")

ALL PRODUCT DIMENSIONS EXPRESSED IN MILLIMETRES (mm)

# HARDIE'S "HIGHLINE"

## Vertical Profiled Wall Panels



Now the fashion is to vertical boarding —  
achieve the bold look with Hardie's "Highline" —  
in the big wide panel

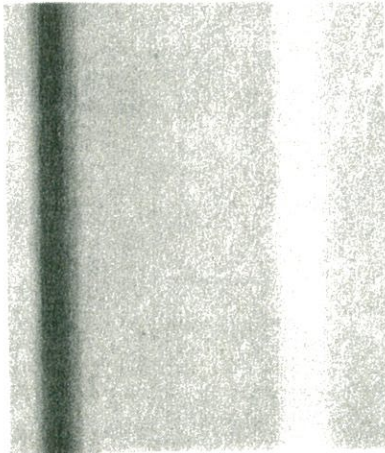
Width of panel	1 205	(3'11½")
Net cover	1 155	(3'9½")
Thickness	6.0	(¼")
Stock lengths	1 800	(5'10 7/8")
	2 100	(6'10 11/16")
	2 400	(7'10½")
	2 700	(8'10 5/16")
	3 000	(9'10 1/8")



ALL PRODUCT DIMENSIONS EXPRESSED IN MILLIMETRES (mm)

# HARDIE'S "COVERLINE"

## Vertical Profiled Wall Panels



A new Hardie Panel with the "built-in" cover mould – designed to simplify building with the popular board-and-batten treatment.

Use "Coverline" for screens or boundary fences . . . room dividers . . . feature walls.

Width of panel	950	(3'1½")
Net cover	915	(3'0")
Thickness	6.0	(¼")
Stock lengths	1 800	(5'10 7/8")
	2 100	(6'10 11/16")
	2 400	(7'10½")
	2 700	(8'10 5/16")
	3 000	(9'10 1/8")

ALL PRODUCT DIMENSIONS EXPRESSED IN MILLIMETRES (mm)

# HARDIE'S "SUPER-SIX"

## CORRUGATED ROOFING

For domestic and industrial roofing and walling, fences, screens, partitions, carports, garages, etc.

Width of sheet	1 080	(3'6½")
Net cover	1 000	(3'3½")
Thickness	6.4	(¼")
Projection for framing	50	(2")
Stock lengths	750	(2'5 17/32") to
	3 000	(9'10 1/8") in 150 (5 29/32") nom. rises

Art. SS200: "Super-Six" Corrugated Sheets, per square metre **\$1.31**

### APPROX. PRICE PER SHEET, "SUPER-SIX" CORRUGATED

	Lengths		Lengths
750 (2'5 17/32")	<b>\$1.06</b>	1 950 (6'4 25/32")	<b>\$2.76</b>
900 (2'11 7/16")	<b>\$1.27</b>	2 100 (6'10 11/16")	<b>\$2.97</b>
1 050 (3'5 11/32")	<b>\$1.48</b>	2 250 (7'4 19/32")	<b>\$3.18</b>
1 200 (3'11¼")	<b>\$1.70</b>	2 400 (7'10½")	<b>\$3.39</b>
1 350 (4'5 5/32")	<b>\$1.91</b>	2 550 (8'4 13/32")	<b>\$3.60</b>
1 500 (4'11 1/16")	<b>\$2.12</b>	2 700 (8'10 5/16")	<b>\$3.83</b>
1 650 (5'4 31/32")	<b>\$2.33</b>	2 850 (9'4 7/32")	<b>\$4.03</b>
1 800 (5'10 7/8")	<b>\$2.54</b>	3 000 (9'10 1/8")	<b>\$4.24</b>

"TUSKAN" TILES — 1 080 wide x 800 long (3'6½" x 2'7½")

6.4 (¼") thickness — Price per square metre **\$1.31**

7.5 (5/16") thickness — Price per square metre **\$1.71**

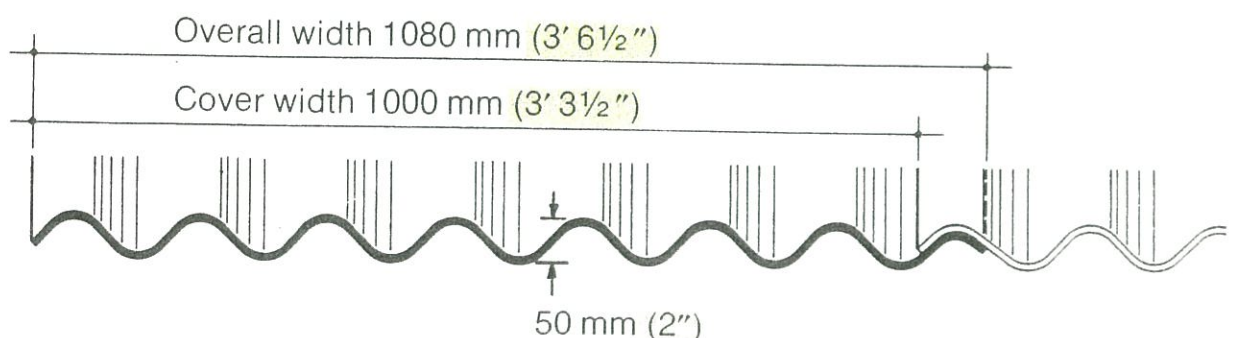
### "SUPER-SIX" FENCE CAPPING

40 x 55 x 40 (1½" x 2 1/8" x 1½") 6.0 (¼") thick — price per metre — **\$0.69**

75 x 55 x 75 (3" x 2 1/8" x 3") 6.0 (¼") thick — price per metre — **\$0.92**

150 x 55 x 150 (6" x 2 1/8" x 6") 6.0 (¼") thick — price per metre — **\$1.31**

For Fixing Accessories See Next Page.



NO CHANGE IN THICKNESS, PROFILE OR WIDTH

# HARDIE'S "STANDARD"

## CORRUGATED ROOFING

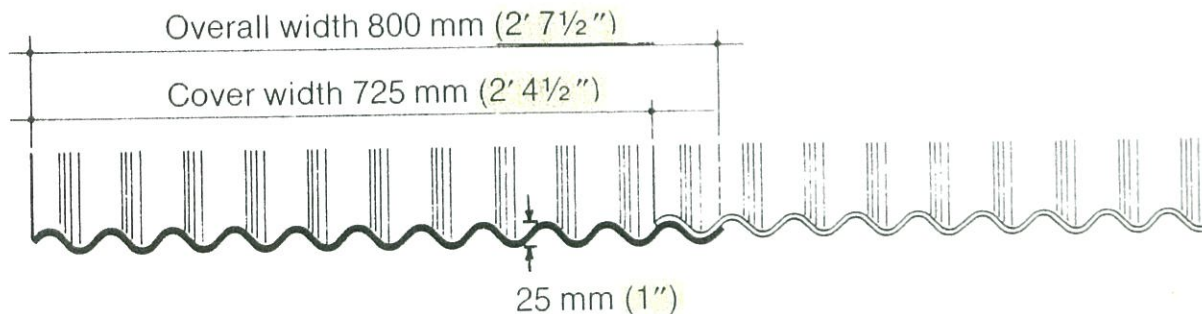
Corrugated asbestos-cement sheets with 75 (3") corrugations side lap.

Width of sheet	800	(2'7½")
Net cover	725	(2'4½")
Thickness	5.5	(7/32")
Projection from framing	25	(1")
Stock lengths	1 800	(5'10 7/8") to
	3 000	(9'10 1/8") in 300 (11 13/16") nom. rises

Art. S300: "Standard" Corrugated – Price per square metre – **\$1.41**

### APPROX. PRICE PER SHEET "STANDARD" CORRUGATED

	Lengths		Lengths
1 800 (5'10 7/8")	<b>\$2.03</b>	2 700 (8'10 5/16")	<b>\$3.05</b>
2 100 (6'10 11/16")	<b>\$2.37</b>	3 000 (9'10 1/8")	<b>\$3.38</b>
2 400 (7'10½")	<b>\$2.71</b>		



NO CHANGE IN PROFILE, THICKNESS OR WIDTH

### ACCESSORIES FOR FIXING CORRUGATED SHEETS (Prices on application)

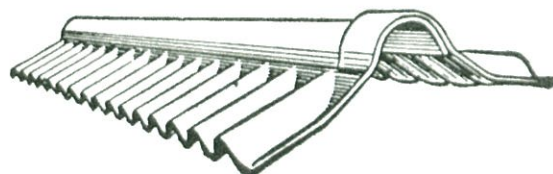
- Roofing screws, 50 x 5 (2" x 12 gauge), per 100
- Roofing screws, 65 x 5 (2½" x 12 gauge), per 100
- Roofing screws, 75 x 6 (3" x 14 gauge), per 100
- Roofing screws, 90 x 6 (3½" x 14 gauge) per 100
- Roofing screws, 100 x 6 (4" x 14 gauge), per 100
- Roof Washers, galvanised, per 100
- Roof Washers, felt, per 100
- Plastic Bitumen, 570 millilitre nom. (1 pint)
- Plastic Bitumen, 1.15 litre nom. (1 quart)

# ROOFING ACCESSORIES

## 2-PIECE FLUTED RIDGE CAPPING

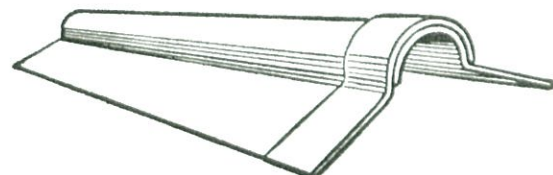
Art. SS250: For "Super Six" sheets, Length 1 105 (3'7½") Net cover 1 000 (3'3½") each, \$2.72

Art. S330: For "Standard" sheets, Length 815 (2'8") Net Cover 725 (2'4½") each \$2.00



## 2-PIECE PLAIN ROLL RIDGING

Art. CM400: "Super-Six" or "Standard" Sheets Length 1 950 (6'4 7/8") Net Cover 1 800 (5'10 7/8") each, \$3.51



## FLUTED SADDLE RIDGING

For New Contour "Super Six". Stock pitches:— 5°, 7½°, 10°, 12½°, 15°, 17½°, 20°, 22½°, 25°

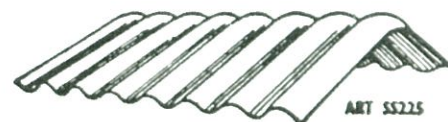
Art. SS225: Fluted Saddle Ridging

Thickness 6.4 (¼"), each \$3.79

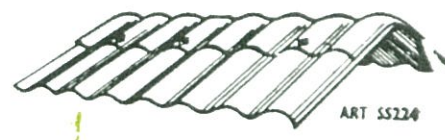
Thickness 7.5 (5/16"), each \$5.38

Art. SS225A: Vented Saddle Ridge, each \$3.79

Art. SS224: Double Vented Saddle Ridge, \$5.84



ART SS225



ART SS224

## HALF-ROUND RIDGE CAPPING

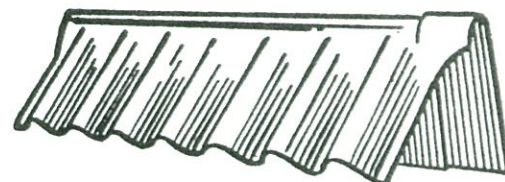
Art. SS260: Nom. diameter 225 (9") Length 455 (1'6") Net cover 405 (1'4") each \$0.47

## \*\*\* SAWTOOTH RIDGE CAPPING

Art. SS255: "Super Six" 1-piece fixed angle 300 x 225 (12" x 9"), each \$2.32

Art. S331: "Standard" 1-piece fixed angle 255 x 225 (10" x 9"), each \$1.71

Art. SS259: "Super Six" 2-piece adjustable Fluted Wing 300 (12"), each \$1.36



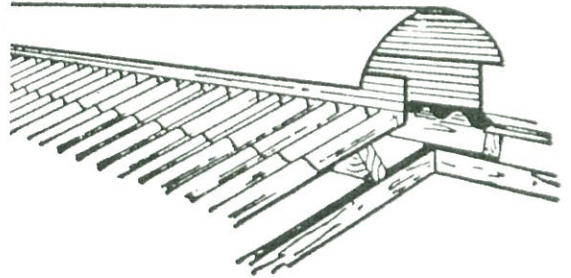
## ROOFING ACCESSORIES (Contd.)

### \*\*\* VENTILATING RIDGE

Manufactured to order, Price includes brackets and apron flashing. Stock lengths 1 950 (6'4 7/8") Net cover 1 800 (5'10 7/8")

Art. CM452: Diameter 580 (23"), price per metre \$9.68

Art. CM461: Diameter 290 (11½"), price per metre \$5.63



### \*\*\* SKYLIGHTS AND MANHOLES

Manufactured to order in "Super Six" or "Standard" Sheets, Opening in position required.

Art. SS232: "Super Six" Skylight, opening 1 525 x 455 (5'0" x 1'6")

Art. S320 "Standard" Skylight, opening 965 x 380 (3'2" x 1'3")

Art. S321: "Standard" Skylight, opening 1 525 x 380 (5'0" x 1'3")

Art. SS245: "Super Six" Manhole, opening 990 x 405 (3'3" x 1'4")

Art. S325: "Standard" Manhole, opening 990 x 405 (3'3" x 1'4")

Art. CM490: Lid for "Fibrolite" Manhole  
Full particulars and prices on application



### \*\*\* ART. CM440: ROOF VENTILATORS

Manufactured to order. Ridge and Slope Bases available to all sizes.

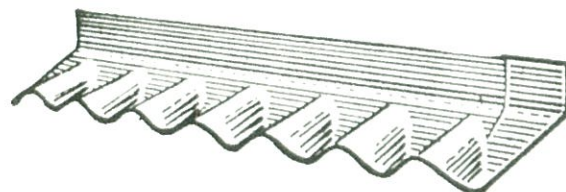


# ROOFING ACCESSORIES (Contd.)

## \*\*\* APRON FLASHING

Art. SS272: For "Super Six" Sheets

Stock lengths	1 105 (3'7½")	
Net Cover	1 000 (3'3½")	
Sizes – 225 x 50	(9" x 2"), each	\$1.20
225 x 75	(9" x 3"), each	\$1.20
225 x 100	(9" x 4"), each	\$1.31
225 x 125	(9" x 5"), each	\$1.31
225 x 150	(9" x 6"), each	\$1.31



Art. S351: For "Standard" sheets

Stock lengths	815 (2'8")	
Net cover	725 (2'4½")	
Sizes – 200 x 50	(8" x 2"), each	\$1.12
200 x 75	(8" x 3"), each	\$1.12
200 x 100	(8" x 4"), each	\$1.17
200 x 125	(8" x 5"), each	\$1.17
200 x 150	(8" x 6"), each	\$1.17

## \*\*\* SIDE FLASHING

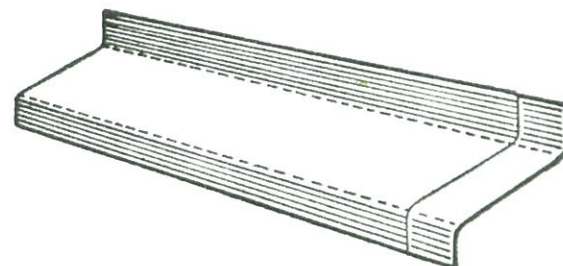
Stock lengths	2 400 (7'10½")
Net cover	2 300 (7'6½")

For "Super Six" Sheets

255 x 75 x 50	(10" x 3" x 2")	
Art. SS268R: Right-hand socket, each		\$2.72
Art. SS268L: Left-hand socket, each		\$2.72

For "Standard" Sheets

150 x 75 x 25	(6" x 3" x 1")	
Art. S350R: Right-hand socket, each		\$2.24
Art. S350L: Left-hand socket, each		\$2.24



## GUTTER FLASHING

Art. SS285: For "Super Six" Sheets	
Length 1 000 (3'3½"), each	\$0.89

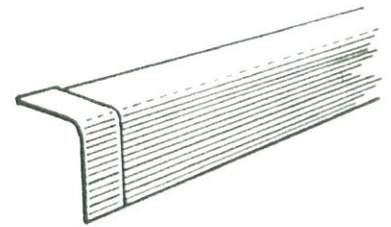


# ROOFING ACCESSORIES (Contd.)

## BARGE MOULDING

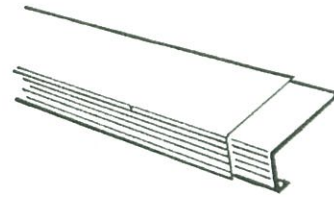
Art. CM431: Plain Angle Barge

Stock lengths	1 800 (5'10 7/8")	
	2 400 (7'10 1/2")	
Sizes – 100 x 100	(4" x 4"),	
	Price per metre	\$0.59
150 x 150	(6" x 6"),	
	Price per metre	\$0.79
200 x 200	(8" x 8"),	
	Price per metre	\$0.92
*** 225 x 225	(9" x 9"),	
	Price per metre	\$0.98
*** 250 x 250	(10" x 10")	
	Price per metre	\$1.05
*** 300 x 300	(12" x 12")	
	Price per metre	\$1.25



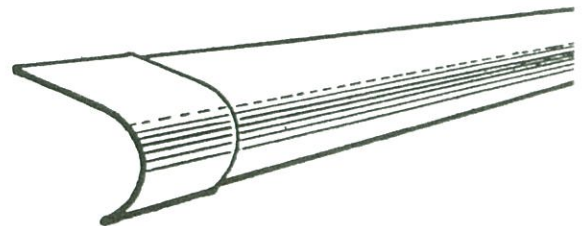
## BARGE MOULDINGS WITH 25 (1") RETURN

Stock lengths	1 800 (5'10 7/8")	
	2 400 (7'10 1/2")	
*** Art. CM432: 225 x 50 x 25	(9" x 2" x 1")	price per metre
		\$1.28
Art. CM426: 225 x 100 x 25	(9" x 4" x 1")	Price per metre
		\$1.35
*** Art. CM420: 225 x 200 x 25	(9" x 8" x 1")	Price per metre
		\$1.74



## "J" MOULDING

Art. CM406: Dia of roll 125 (5")	
Stock length	1 950 (6'4 3/8")
Net cover	1 800 (5'10 7/8")
supplied with right or left hand recessed sockets as required	Price per metre
	\$1.18



## COTTAGE MOULDING

Art. CM430: Dia of roll 90 (3 1/2")	
Stock length	2 400 (7'10 1/2")



# ROOFING ACCESSORIES (Contd.)

## STOP ENDS

Art. CM414: for 2-piece ridge, each	\$1.08
Art. SS265: for 225 (9") dia, half-round ridge each	\$1.15
Art. SS227: for fluted saddle ridge and 150 x 150 (6" x 6") barge, each	\$2.14
Art. SS227: for fluted saddle ridge and 200 x 200 (8" x 8") barge, each	\$2.14
Art. SS227A: for fluted saddle ridge and 225 x 100 x 25 (9" x 4" x 1") barge, each	\$2.14
Art. SS227A: for fluted saddle ridge and 225 x 50 x 25 (9" x 2" x 1") barge, each	\$2.14
Art. SS227B: for fluted saddle ridge and 'J' mould, each	\$2.14
Art. SS227C: for fluted saddle ridge and cottage mould, each	\$2.14

***Art. CM463: for 580 (23") Ventilating ridge, each	\$4.02
***Art. CM462: for 290 (11½") Ventilating ridge, each	\$3.35
***Art. S332L: for Standard 1-piece Sawtooth Ridge L/H, each	\$2.14
***Art. S332R: for Standard 1-piece Sawtooth Ridge R/H, each	\$2.14
***Art. SS246L: for Super Six 1-piece Sawtooth Ridge L/H, each	\$2.14
***Art. SS264R: for Super Six 1-piece Sawtooth Ridge R/H, each	\$2.14
***Art. S335L: for Standard 2-piece Sawtooth Ridge L/H, each	\$2.14
***Art. S335R: for Standard 2-piece Sawtooth Ridge R/H, each	\$2.14
***Art. SS270R: for Super Six 2-piece Sawtooth Ridge L/H, each	\$2.14
R/H, each	\$2.14

## GUSSETS

Manufactured to suit roof pitch

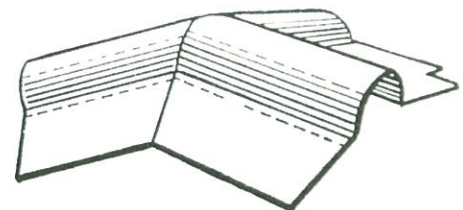
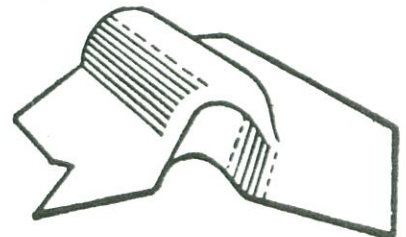
Art. CM418: Gusset for 2-piece ridge, each	\$3.35
Art. SS296: Gusset for half-round ridge, each	\$3.35

## APEX CAPS

Art. CM403: Apex Caps for 2-piece ridge. Stock pitches 10°, 15°, 17½°, 20°, 22½°, 25°, 26½°, each	\$3.35
Art. CM417: Valley Apex Cap for 2-piece ridge, Stock pitches 15°, 20°, 25°, each	\$3.35
Art. CM416: 4-way Apex Cap for 2-piece ridge, Stock pitches 15°, 20°, 25°, each	\$3.35
Art. SS295: Apex Cap for half-round ridge, Stock pitches 15°, 20°, 25°, each	\$3.35
Art. SS293: Valley Apex Cap for half-round ridge, Stock pitches 15°, 20°, 25°, each	\$3.35

## SCRIBED BIRDPROOFING

Art. SS280: "Hardiflex" Eaves Birdproofing for "Super Six", each	\$0.26
Expanded Metal Birdproofing for "Super Six", each	\$0.25





# ROOFING ACCESSORIES (Contd.)

## MITRE ANGLES

Art. CM409I: Internal for 'J' Mould, each	\$3.76
Art. CM409E: External for 'J' Mould, each	\$3.76
Art. CM437I: Internal for Cottage Mould, each	\$3.76
Art. CM437E: External for Cottage Mould, each	\$3.76
Art. CM435I: Internal for 225 x 100 x 25 (9" x 4" x 1") Mould, each	\$3.76
Art. CM435E: External for 225 x 100 x 25 (9" x 4" x 1") Mould, each	\$3.76
Art. CM427I: Internal for 225 x 50 x 25 (9" x 2" x 1") Mould each	\$3.76
Art. CM427E: External for 225 x 50 x 25 (9" x 2" x 1") Mould, each	\$3.76



## BARGE AND HIP STARTERS

Art. CM443: Barge starter for 'J' Mould, each	\$0.88
Art. CM444: Barge starter for Cottage Mould, each	\$0.88
Art. CM445: Barge starter for 3-wing Barge, each	\$0.88
Art. CM401: Hip starter for 2-piece ridge, each	\$0.88
Art. SS296: Hip starter for half-round ridge, each	\$0.88
Art. S261: Barge starter for half-round barge, each	\$0.88

# DOOR AND WINDOW MOULDINGS

## DOOR AND WINDOW MOULDINGS

Supplied with plain or spigoted ends.

Stock lengths	1 800 (5'10 7/8")
	2 100 (6'10 11/16")
	2 400 (7'10 1/2")
	2 700 (8'10 5/16")
	3 000 (9'10 1/2")

\*Art. CM480: DOOR & WINDOW HEAD MOULD for use at heads of windows and doors on walls covered with A.C. Corrugated Sheets

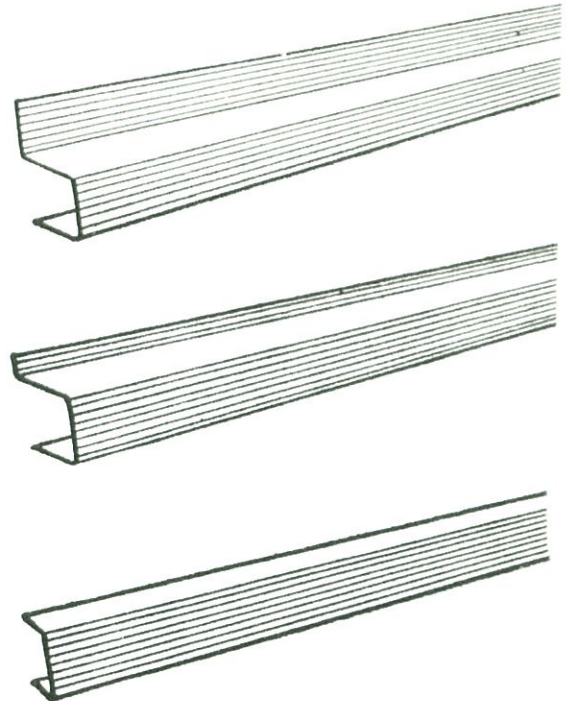
Price per metre \$2.36

\*Art. CM482: WINDOW SILL MOULD for use on bottoms of windows on walls covered with A.C. Corrugated Sheets.

Price per metre \$2.36

\*Art. CM 484: DOOR & WINDOW STILE MOULD for use at sides of windows and doors on walls covered with A.C. Corrugated Sheets.

Price per metre \$2.23



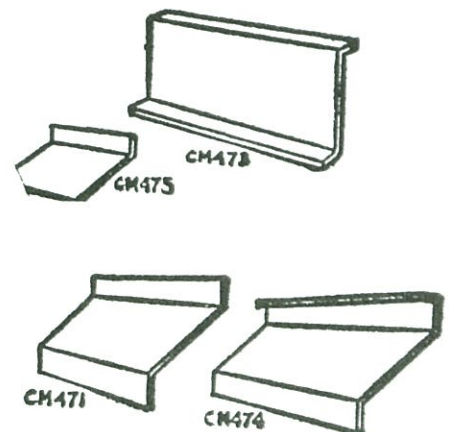
## LOUVRE BLADES

### HARDIE'S AC LOUVRE BLADES

Manufactured to order to length required.

Maximum length	1 800 (5'10 7/8")
Stock thickness	7.5 (5/16")

Art. CM471: depth 210 (8 1/4")	Price per metre	\$1.08
Art. CM472: depth 115 (4 1/2")	Price per metre	\$0.69
Art. CM473: depth 150 (6")	Price per metre	\$1.35
Art. CM474: depth 210 (8 1/4")	Price per metre	\$1.41
Art. CM475: depth 90 (3 1/2")	Price per metre	\$0.66

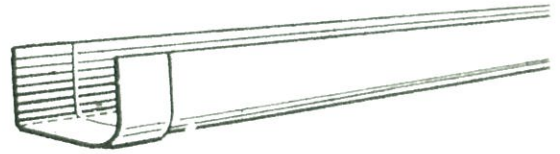


# EAVES GUTTER & ACCESSORIES

## EAVES GUTTER & ACCESSORIES

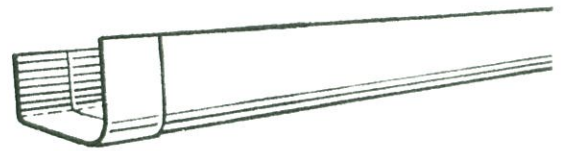
\*Art. EG520: Manufactured with plain or socketed ends. Sockets are placed at left-hand end of gutter lengths. Stock length 2 200 (7'2 5/8") including 100 (4") socket.

- 100 (4") Standard-front Eaves Gutter, each \$1.98
- 125 (5") Standard-front Eaves Gutter, each \$2.05
- 150 (6") Standard-front Eaves Gutter, each \$2.57
- 200 (8") Standard-front Eaves Gutter, each \$3.96



Art. EG500: Manufactured with plain or socketed ends. Sockets are placed at left-hand end of gutter lengths. Stock length 2 200 (7'2 5/8") including 100 (4") socket.

- 125 (5") raised-front Eaves Gutter, each \$2.42
- 150 (6") raised-front Eaves Gutter, each \$2.79
- 200 (8") raised-front Eaves Gutter, each \$4.11



## CLOSED OUTLETS

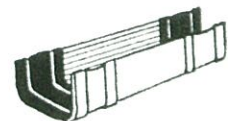
\*Art. EG523: Standard front

- 100 (4") each \$1.81
- 125 (5") each \$1.87
- 150 (6") each \$1.98
- 200 (8") each \$2.21



\*Art. EG503: Raised front

- 125 (5") each \$1.90
- 150 (6") each \$2.04
- 200 (8") each \$2.29



## SUMP OUTLETS

\*Art. EG824: Standard front

- 100 (4") each \$3.35
- 125 (5") each \$3.35
- 150 (6") each \$3.54
- 200 (8") each \$3.54



## RAKING ANGLES Standard front

\*Art. EG529: External

\*Art. EG530: Internal

- 100 (4") each \$3.35
- 125 (5") each \$3.41
- 150 (6") each \$3.68
- 200 (8") each \$3.94



# EAVES GUTTER & ACCESSORIES

## PLAIN ANGLES 90°

\*Art. EG527: Standard front, external

\*Art. EG528: Standard front, internal

100 (4")	each	\$3.35
125 (5")	each	\$3.41
150 (6")	each	\$3.68
200 (8")	each	\$3.94

\*Art. EG507: Raised front, external

\*Art. EG508: Raised front, internal

125 (5")	each	\$3.48
150 (6")	each	\$3.74
200 (8")	each	\$4.01



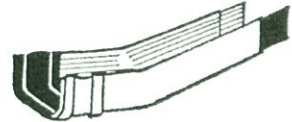
## RAKING BENDS

\*Art. EG531: Standard front

100 (4")	each	\$3.35
125 (5")	each	\$3.41
150 (6")	each	\$3.68
200 (8")	each	\$3.94

\*Art. EG511: Raised front

125 (5")	each	\$3.48
150 (6")	each	\$3.74
200 (8")	each	\$4.01



## LOOSE STOP ENDS

\*Art. EG533L: Standard front left hand

\*Art. EG533R: Standard front right hand

\*Art. EG513L: Raised front left hand

\*Art. EG513R: Raised front right hand

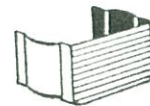
All sizes, each \$1.00



## LOOSE SOCKET OR COLLAR

\*Art. EG534: Standard front

100 (4")	each	\$0.54
125 (5")	each	\$0.69
150 (6")	each	\$0.88
200 (8")	each	\$1.00



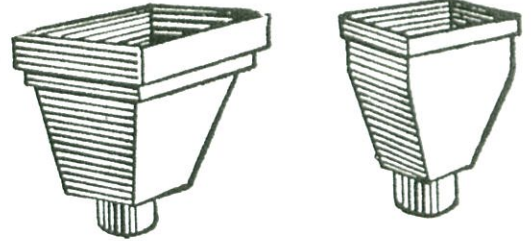
\*Art. EG514: Raised front

# EAVES, GUTTER ACCESSORIES

## RAINWATER HEADS

Manufactured to order with outlets to suit size of downpipe used. Prices do not include brackets.

*Art. EG540:	300 x 150 (12" x 6")	each	\$7.00
*Art. EG570:	450 x 300 (18" x 12")	each	\$9.50
*Art. BG571:	600 x 300 (24" x 12")	each	\$9.70
*Art. BG572:	750 x 300 (30" x 12")	each	\$11.90



## BOX GUTTER

\*Art. BG550: Manufactured to order, with outlets, sockets, stop-ends etc. in position as required.

### Stock sizes

225 x 100 (9" x 4")	Price per metre	\$1.84
300 x 100 (12" x 4")	Price per metre	\$2.30
375 x 100 (15" x 4")	Price per metre	\$2.49
450 x 100 (18" x 4")	Price per metre	\$2.76
600 x 100 (24" x 4")	Price per metre	\$3.67
750 x 100 (30" x 4")	Price per metre	\$5.15

# DOWNPIPE and ACCESSORIES

## DOWNPIPE and ACCESSORIES

Supplied with socketed ends only.

Stock lengths, socketed pipe 1 900 (6'2 13/16")

Available round, square and rectangular

Round, 75 (3") diameter, each	\$2.66
Round, 100 (4") diameter, each	\$2.79
Round, 125 (5") diameter, each	\$3.29
Round, 150 (6") diameter, each	\$4.50
Square, 100 x 100 (4" x 4"), each	\$3.55
Rectangular, 100 x 50 (4" x 2") each	\$3.23
Rectangular, 100 x 75 (4" x 3") each	\$3.42
Rectangular, 150 x 100 (6" x 4") each	\$4.31

## DOWNPIPE BENDS

Stock angles 95°, 135°

Stock lengths:—	405 (1'4")
	865 (2'10")
	1 320 (4'4")

### Art. DP601: ROUND DOWNPIPE BENDS EACH

Stock lengths	diameter 75 (3")	diameter 100 (4")	diameter 125 (5")	diameter 150 (6")
405 (1'4")	\$1.47	\$1.61	\$1.87	\$2.61
865 (2'10")	\$2.14	\$2.40	\$2.68	\$4.82
1 320 (4'4")	\$2.86	\$3.08	\$3.63	\$6.03

### Art. DP621: Square Downpipe Bends 100 x 100 (4" x 4") each

405 (1'4")	\$2.68
865 (2'10")	\$3.35
1 320 (4'4")	\$4.42

### \*Art. DP631: RECTANGULAR BENDS EACH

Stock lengths	100 x 50 (4" x 2")	100 x 75 (4" x 3")	150 x 100 (6" x 4")
405 (1'4")	\$1.87	\$2.61	\$3.21
865 (2'10")	\$2.68	\$3.28	\$3.94

# DOWNPIPE and ACCESSORIES (Contd.)

## DOWNPIPE SHOES

Art. DP602: ROUND SHOES 135°,  
length 1 370 (4'6")

75 (3")	each	\$2.86
100 (4")	each	\$3.08
125 (5")	each	\$3.63
150 (6")	each	\$6.03

\*Art. DP622: SQUARE SHOES,

100 x 100 (4" x 4")

Length 405 (1'4") each \$2.68

\*Art. DP632: RECTANGULAR SHOES,

Length 405 (1'4")

100 x 75 (4" x 3") each \$2.61

150 x 100 (6" x 4") each \$3.21

## DOWNPIPE JUNCTIONS

Art. DP603: ROUND JUNCTIONS, 135°,

length 710 (2'4")

75 (3")	each	\$6.89
100 (4")	each	\$6.95
125 (5")	each	\$7.16
150 (6")	each	\$7.28

\*Art. DP623: SQUARE JUNCTIONS

100 x 100 (4" x 4") each \$6.55

\*Art. DP633: RECTANGULAR JUNCTIONS

100 x 75 (4" x 3") each \$6.43

150 x 100 (6" x 4") each \$6.76

## DOWNPIPE SPREADERS

Art. DP605: ROUND SPREADERS

75 (3")	each	\$7.16
100 (4")	each	\$7.35
125 (5")	each	\$7.75
150 (6")	each	\$7.83

\*Art. DP625: SQUARE SPREADERS,

100 x 100 (4" x 4") each \$6.95

\*Art. DP635: RECTANGULAR SPREADERS

100 x 75 (4" x 3") each \$6.82

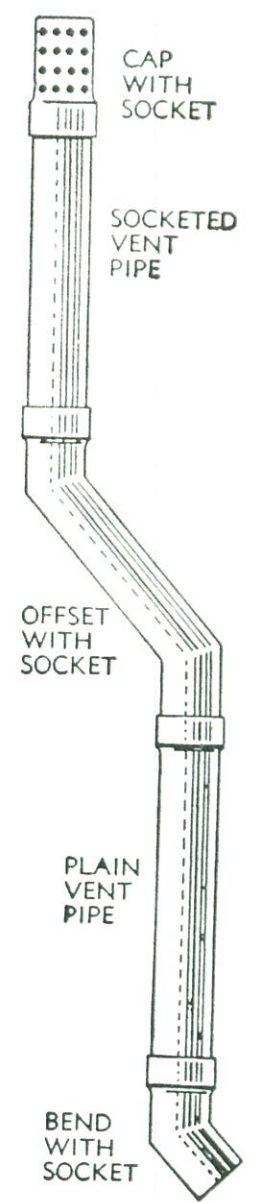
150 x 100 (6" x 4") each \$7.42

# HARDIE'S AC VENT PIPES

For use in sewerage and septic installations.  
 Normal dimensions: Inside diameter 100 (4")  
 Wall thickness 6.0 (1/4")  
 Available lengths 4 metres  
 3 metres  
 2 metres

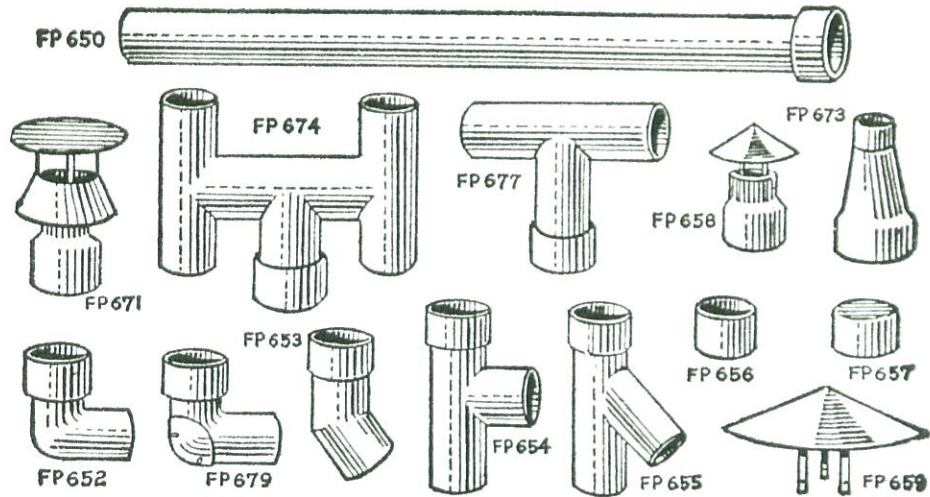
- Art. VP1: SOCKETED VENT PIPE  
 Socketed one end – price per metre **\$1.64**
- Art. VP2: PLAIN VENT PIPE,  
 price per metre **\$1.64**
- Art. VP4: CAPS  
 Perforated and gauze lined. Socketed, each **\$2.25**
- Art. VP6: SOCKETED OFFSETS  
 Stock angle 45°. Offset from 75 (3") to  
 750 (30") in 75 (3") rises, each **\$4.45**
- Art. VP9: BENDS  
 Stock angles 45° to 85° in steps of 5°.  
 Socketed one end, each **\$1.95**
- Art. VP10: LOOSE SOCKETS, each **\$0.75**
- Art. VP13: BRACKETS:  
 Galvanised, with nut and bolt, each P.O.A.

**EPOXY RESIN JOINTING COMPOUND:**  
 Supplied in units sufficient for 8 joints.  
 Price on application.





# HARDIE'S AC FLUE PIPES & FITTINGS



Stock lengths of pipe: Straight pipe socketed 1 900 (6'2 13/16")

Art. No.	Item	50	75	100	125	150	200
		(2')	(3')	(4')	(5')	(6')	(8')
FP650	Socketed Pipe, each	\$2.60	\$2.66	\$2.79	\$3.29	\$4.50	\$6.78
FP652	Bends, 95°, 405 (1'4") each	—	\$1.47	\$1.61	\$1.87	\$2.61	\$4.82
FP653	Bends, 135°, 405 (1'4") each	—	\$1.47	\$1.61	\$1.87	\$2.61	\$4.82
FP652	Bends, 95°, 710 (2'4") each	—	\$2.02	\$2.14	\$2.29	\$2.68	—
FP653	Bends, 135°, 710 (2'4") each	—	\$2.02	\$2.14	\$2.29	\$2.68	—
FP679	Bends with I.O., 405 (1'4") each	—	\$5.02	\$5.08	\$5.15	\$5.21	\$6.95
FP654	Tees, 90°, each	\$3.54	\$3.63	\$3.74	\$4.47	\$4.69	\$5.49
FP655	Tees, 135°, each	\$3.54	\$3.63	\$3.74	\$4.47	\$4.69	\$5.49
FP656	Loose Sockets, each	\$0.73	\$0.75	\$0.78	\$1.00	\$1.14	\$1.57
FP657	Blank Caps, each	\$0.96	\$1.09	\$1.14	\$1.28	\$1.35	\$1.75
FP658	Cone Cap Cowls, each	—	\$3.14	\$3.68	\$3.74	\$3.96	\$4.27
FP659	Chinaman Hat Cowls, each	—	\$1.87	\$1.87	\$1.87	\$2.14	\$2.21
FP674	"H" Piece, each	—	\$8.32	\$8.56	\$8.76	\$9.90	—
FP677	"T" Piece, each	\$3.54	\$3.63	\$3.74	\$4.47	\$4.69	\$5.49
FP671	Smith (or West) Cowl, each	—	—	\$4.25	\$4.25	\$4.25	—
FP670	Mushroom Cowl (or double Chinaman Hat), each	—	—	\$4.55	\$4.55	\$4.55	—
FP672	Torpedo Cowl, each	—	\$4.15	\$4.69	\$5.24	\$5.49	\$6.15
FP673	Tapered Reducers, each,	75 — 50 (3" — 2")					\$2.65
		100 — 75 (4" — 3")					\$2.65
		125 — 100 (5" — 4")					\$2.75

# GARDEN ACCESSORIES

## ROMAN PLANTER

Giant vase-shaped planter  
Height 800 (32'')  
Maximum Width 500 (20'')  
Price, including Sales Tax, ea \$17.62



## FREE FORM PLANTER

Type 'B' Base 300 (12'')  
Top diameter 575 (23'') average  
Price, including Sales Tax, ea \$5.20



Type 'C' Base 200 (8'')  
Top diameter 450 (18'') average  
Price, including Sales Tax, ea \$4.64

## METAL STANDS FOR TYPE 'C' FREE-FORM PLANTERS

Type 'C1' V feet  
P.O.A.\*



## PLANTABOWL

Large saucer shape  
Diameter 975 (39'')  
Depth at centre 225 (9'')  
Price, including Sales Tax, ea \$6.72



## HARDIE'S "LILYPOND"

Lightweight, durable A.C. "Lilypond"  
Beautiful garden ornament.  
Average dimensions: Length 1 650 (5'6'')  
Width 850 (2'10'')  
Depth 325 (13'')  
Price including Sales Tax, ea \$16.80



## GRECIAN PLANTER

Large planter of graceful classical  
curved contour.  
Diameter at 450 (18'')  
Height 525 (21'')  
Price, including Sales Tax, ea \$11.46

## PLANTABOX

Large planter of modern square shape.  
Top measures 450 (18'')

